

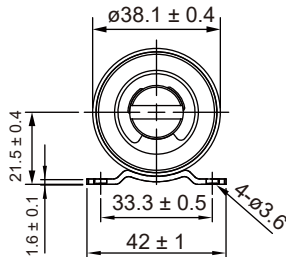
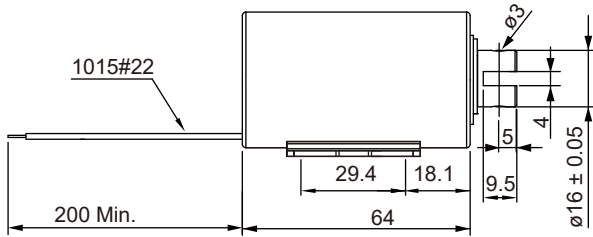
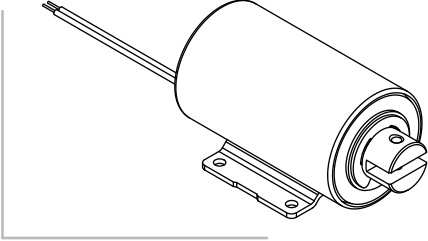


SH-T3864

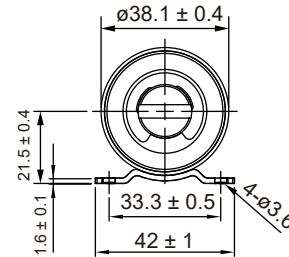
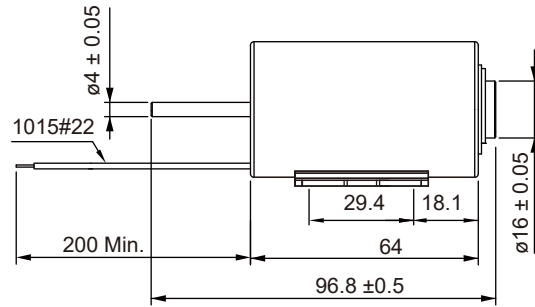
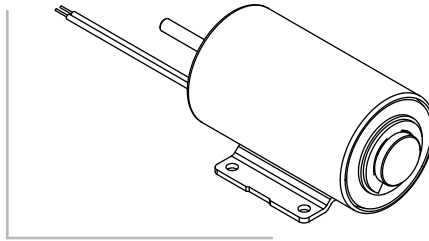
Tubular Solenoid

Unit : mm
Shown energized

PULL TYPE

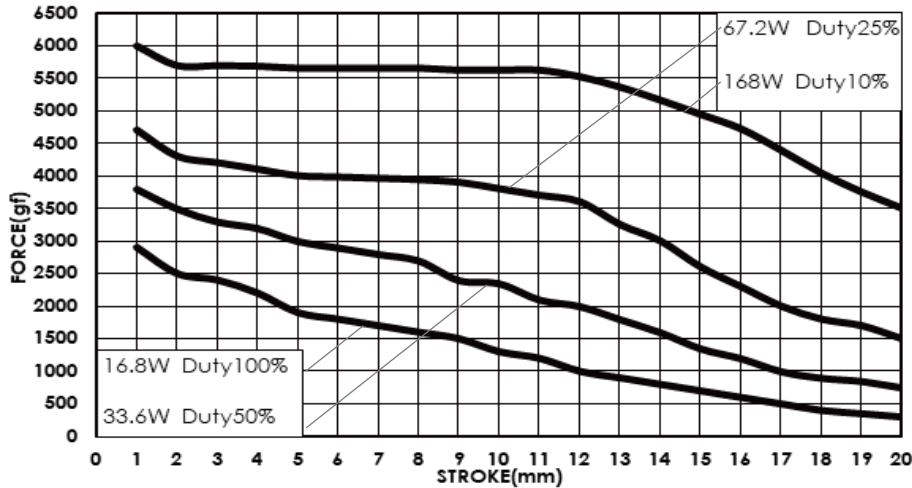


PUSH TYPE



Total Weight : 497 g

DATA FORCE



COIL DATA

Duty cycle(%) = $\frac{\text{"ON" time}}{\text{"ON" time} + \text{"OFF" time}} \times 100\%$		Continuous (100%)	Intermittent (50%)	Intermittent (25%)	Intermittent (10%)
Watts at 20°C		16.8	33.6	67.2	168
MAX. "ON" time in seconds		∞	420	100	25
Type no.	Resistance(20°C)±10%	DC Volts			
SH-T3864S/L-06V	2.1	6	8.5	12	19
SH-T3864S/L-12V	8.5	12	17	24	38
SH-T3864S/L-24V	34	24	34	48	76
SH-T3864S/L-48V	136	48	68	96	152