

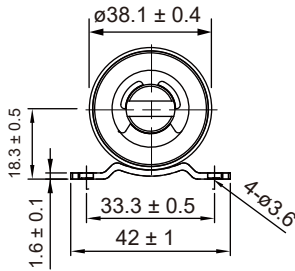
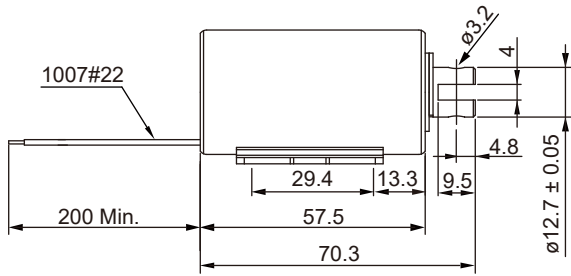
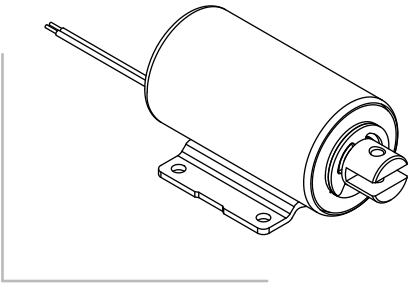


SH-T3257

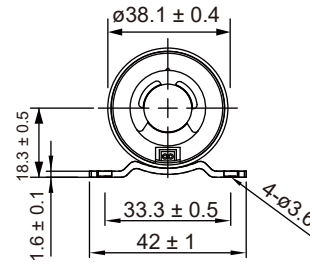
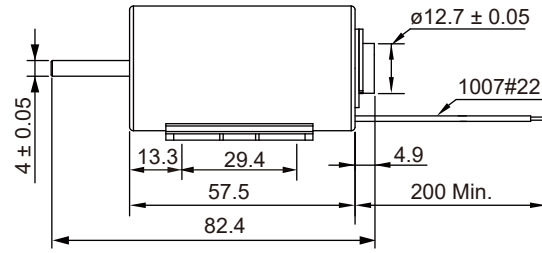
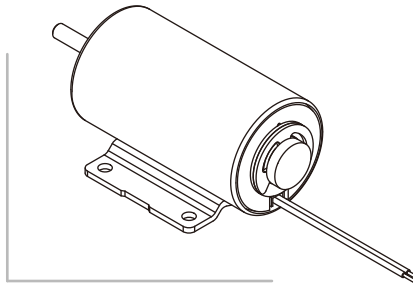
Tubular Solenoid

Unit : mm
Shown energized

PULL TYPE

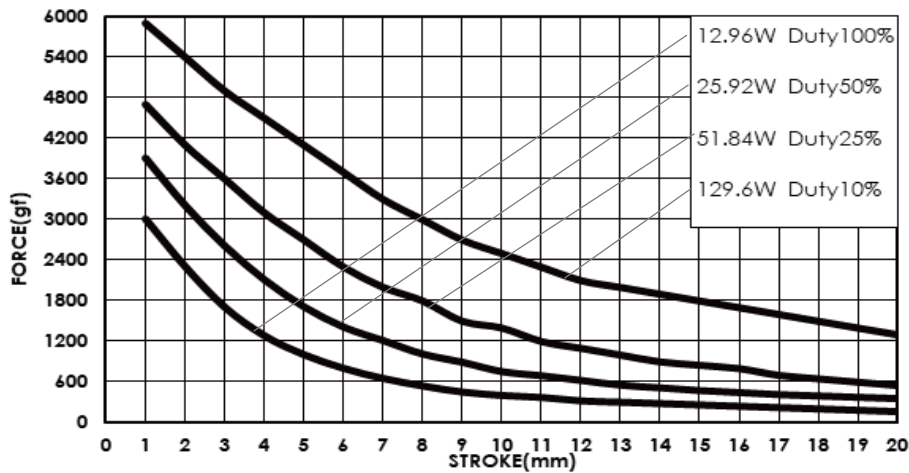


PUSH TYPE



Total Weight : 295 g

DATA FORCE



COIL DATA

Duty cycle(%)	$= \frac{\text{"ON" time}}{\text{"ON" time} + \text{"OFF" time}} \times 100\%$	Continuous (100%)	Intermittent (50%)	Intermittent (25%)	Intermittent (10%)
Watts at 20°C		12.96	25.92	51.84	129.6
MAX. "ON" time in seconds		∞	390	60	18
Type no.	Resistance(20°C)±10%	DC Volts			
SH-T3257S/L-06V	2.77	6	8.5	12	19
SH-T3257S/L-12V	11.07	12	17	24	38
SH-T3257S/L-24V	44.3	24	34	48	76
SH-T3257S/L-48V	177.2	48	68	96	152