

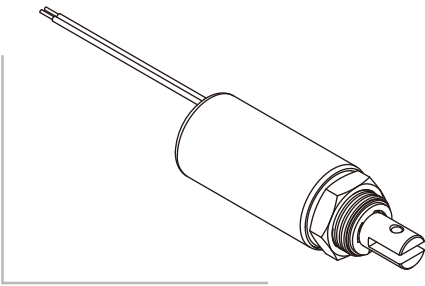


SH-T1939

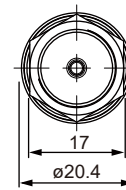
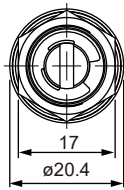
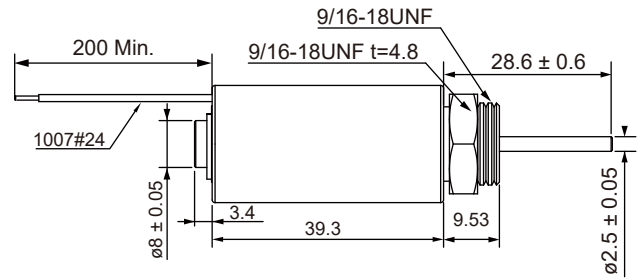
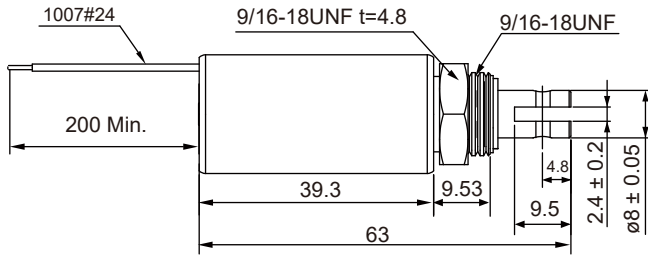
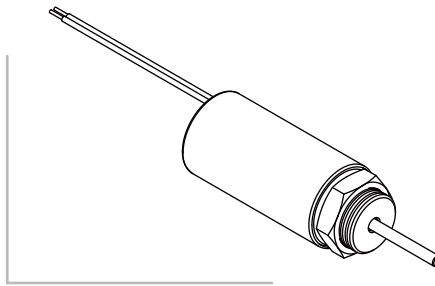
Tubular Solenoid

Unit : mm
Shown energized

PULL TYPE

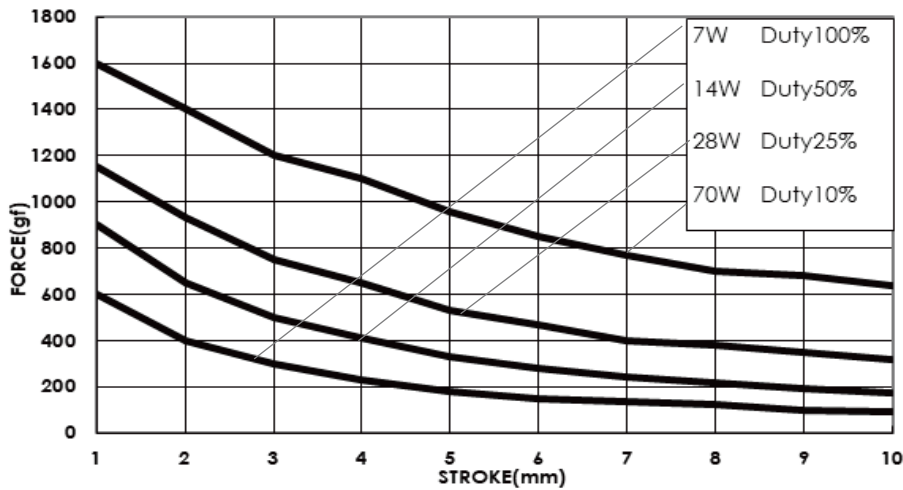


PUSH TYPE



Total Weight : 81 g

DATA FORCE



COIL DATA

Duty cycle(%) = $\frac{\text{"ON" time}}{\text{"ON" time} + \text{"OFF" time}} \times 100\%$	Continuous (100%)	Intermittent (50%)	Intermittent (25%)	Intermittent (10%)	
Watts at 20°C	7	14	28	70	
MAX. "ON" time in seconds	∞	230	25	6	
Type no.	Resistance(20°C)±10%	DC Volts			
SH-T1939S/L-06V	5.14	6	8.5	12	19
SH-T1939S/L-12V	20.6	12	17	24	38
SH-T1939S/L-24V	82.3	24	34	48	76
SH-T1939S/L-48V	329	48	68	96	152