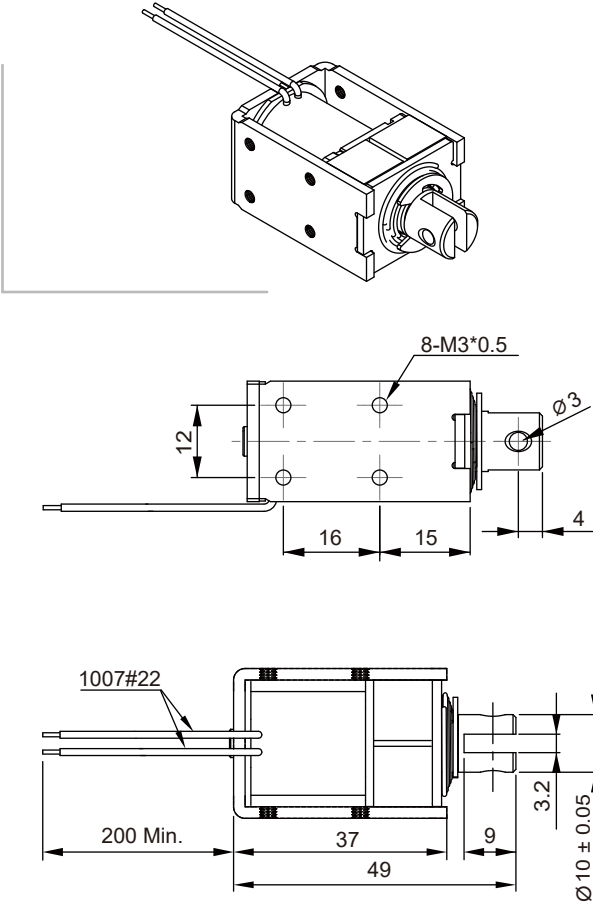




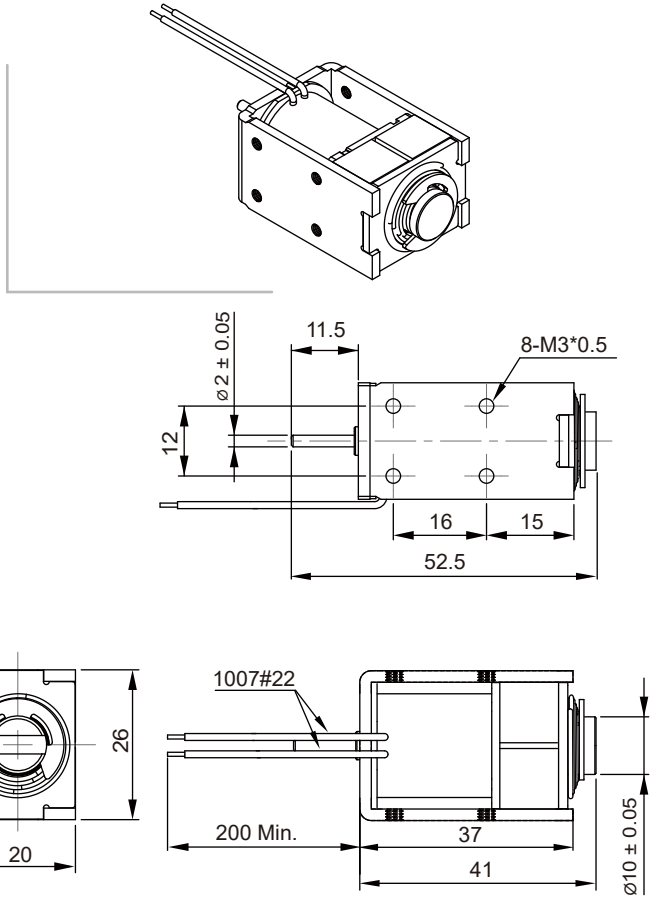
SH-K1037 Permanent Magnet Solenoid

Unit : mm
Shown energized

PULL TYPE

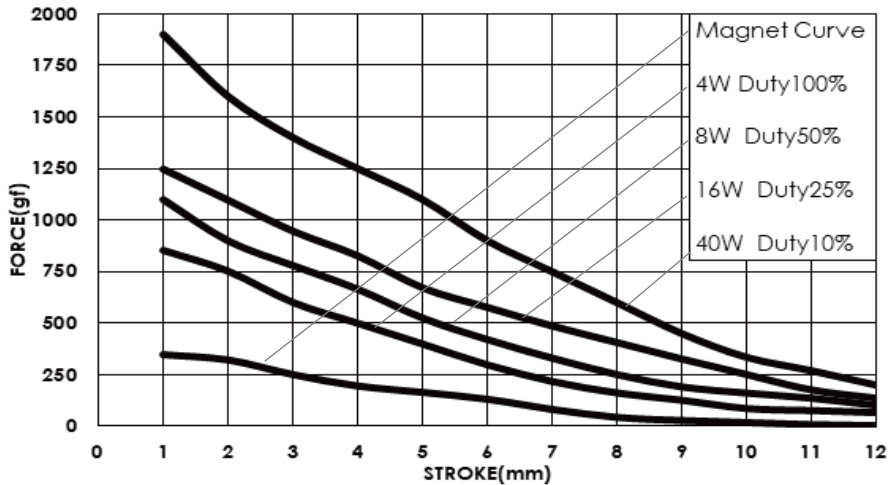


PUSH TYPE



Total Weight : 110 g

DATA FORCE



COIL DATA

Duty cycle(%) = $\frac{\text{"ON" time}}{\text{"ON" time} + \text{"OFF" time}} \times 100\%$		Continuous (100%)	Intermittent (50%)	Intermittent (25%)	Intermittent (10%)
Watts at 20°C		4	8	16	40
MAX. "ON" time in seconds		∞	160	90	30
Type no.	Resistance(20°C)±10%	DC Volts			
SH-K1037S/L-06V	9	4.2	6	8.5	13.4
SH- K1037S/L-12V	36	8.5	12	17	26.8
SH- K1037S/L-24V	144	17	24	34	53.7
SH- K1037S/L-48V	576	34	48	67.9	107.3