

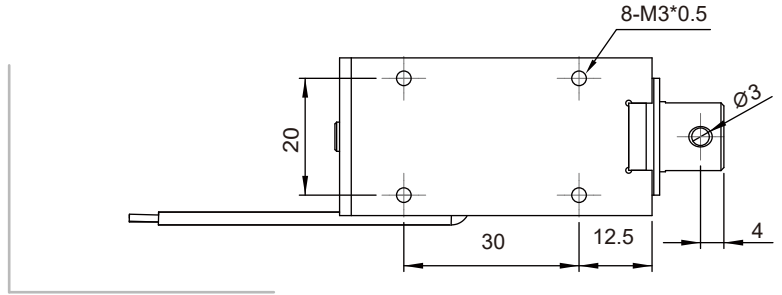
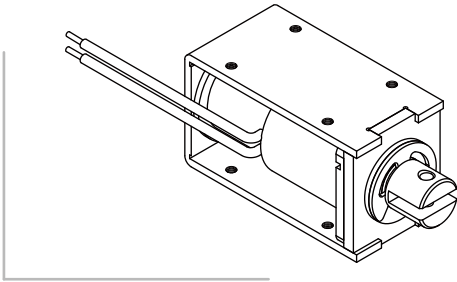


# SH-1253

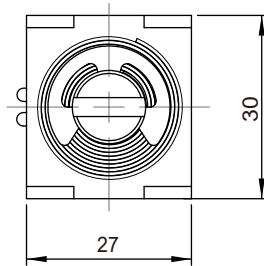
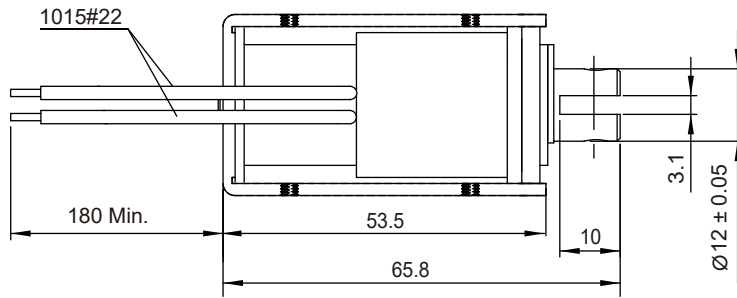
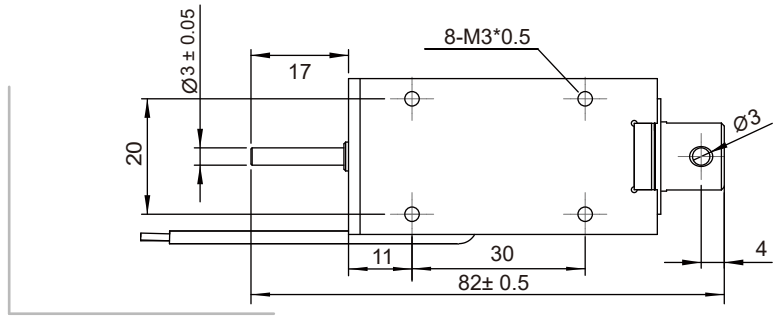
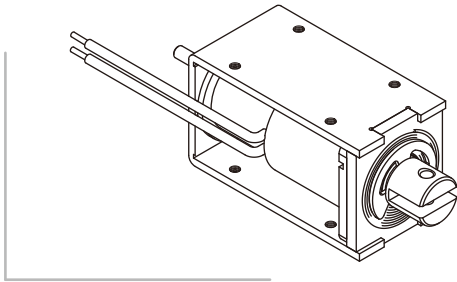
# Open Frame Solenoid

Unit : mm  
Shown energized

## PULL TYPE

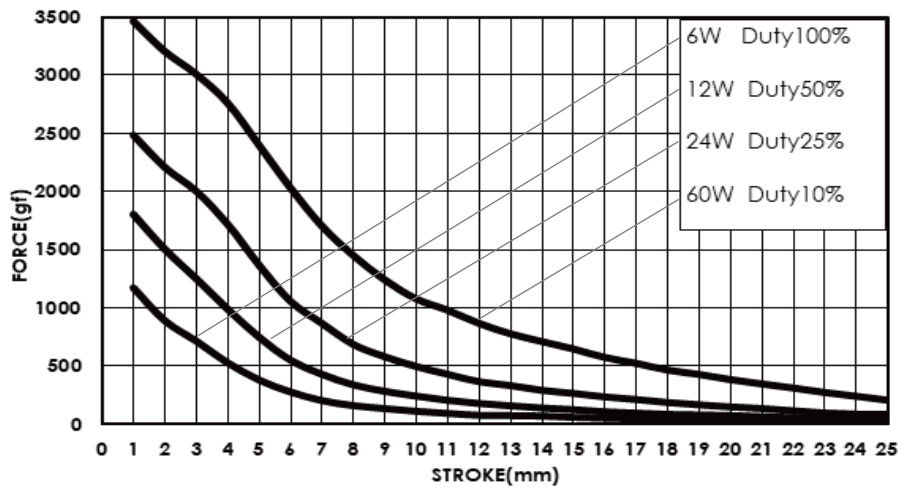


## PUSH TYPE



Total Weight : 205 g

## DATA FORCE



## COIL DATA

Duty cycle(%)	$= \frac{\text{"ON" time}}{\text{"ON" time} + \text{"OFF" time}} \times 100\%$	Continuous (100%)	Intermittent (50%)	Intermittent (25%)	Intermittent (10%)
Watts at 20°C		6	12	24	60
MAX. "ON" time in seconds		∞	140	50	9
Type no.	Resistance(20°C)±10%	DC Volts			
SH-1253S/L-06V	6	6	8.5	12	19
SH-1253S/L-12V	24	12	17	24	38
SH-1253S/L-24V	96	24	34	48	76
SH-1253S/L-48V	384	48	68	96	152