

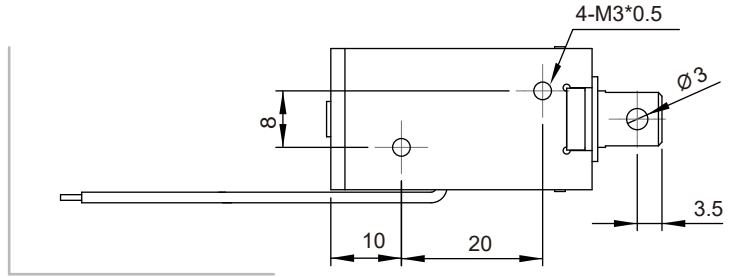
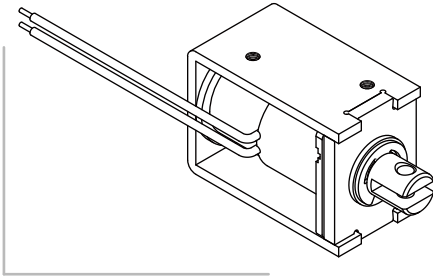


# SH-0837

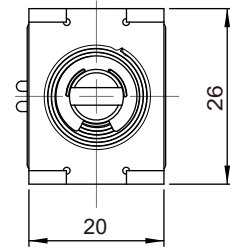
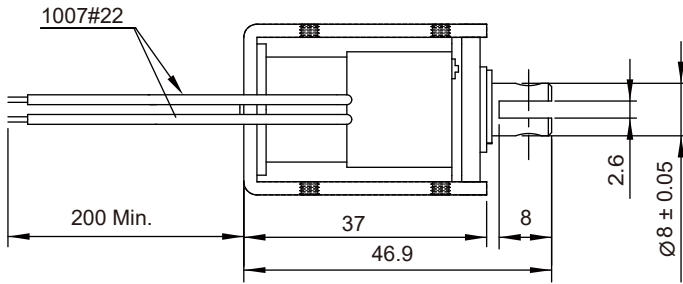
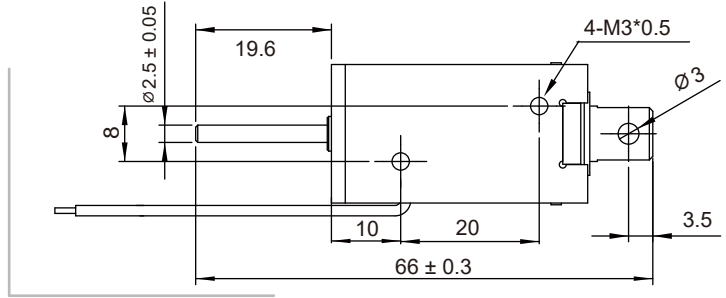
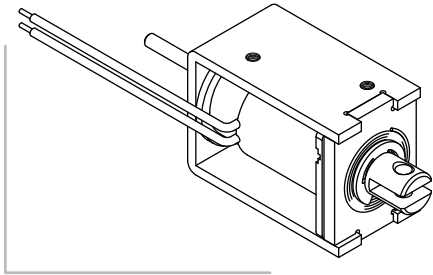
# Open Frame Solenoid

Unit : mm  
Shown energized

## PULL TYPE

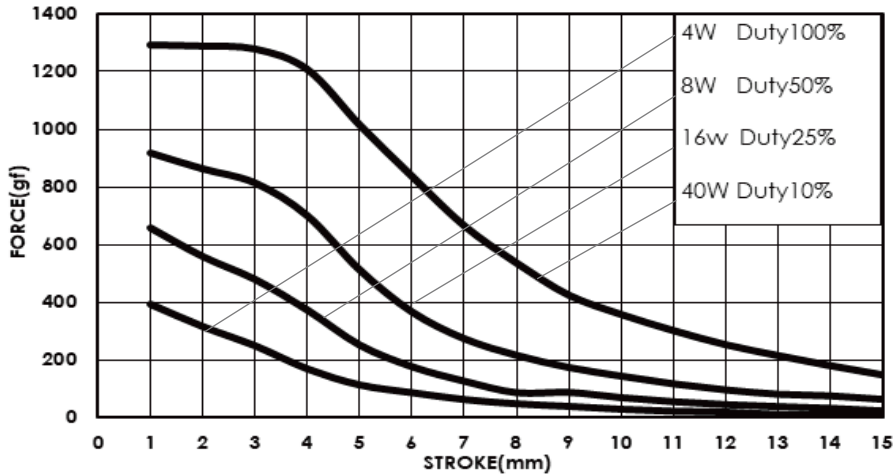


## PUSH TYPE



Total Weight : 96 g

## DATA FORCE



## COIL DATA

|                           |  |                   |                    |                    |                    |
|---------------------------|--|-------------------|--------------------|--------------------|--------------------|
| Duty cycle(%)             | $= \frac{\text{"ON" time}}{\text{"ON" time} + \text{"OFF" time}} \times 100\%$ | Continuous (100%) | Intermittent (50%) | Intermittent (25%) | Intermittent (10%) |
| Watts at 20°C             |  | 4                 | 8                  | 16                 | 40                 |
| MAX. "ON" time in seconds |  | ∞                 | 100                | 36                 | 7                  |
| Type no.                  | Resistance(20°C)±10%   | DC Volts          |                    |                    |                    |
| SH-0837S/L-06V            | 9  | 6                 | 8.5                | 12                 | 19                 |
| SH-0837S/L-12V            | 36   | 12                | 17                 | 24                 | 38                 |
| SH-0837S/L-24V            | 144  | 24                | 34                 | 48                 | 76                 |
| SH-0837S/L-48V            | 576  | 48                | 68                 | 96                 | 152                |