

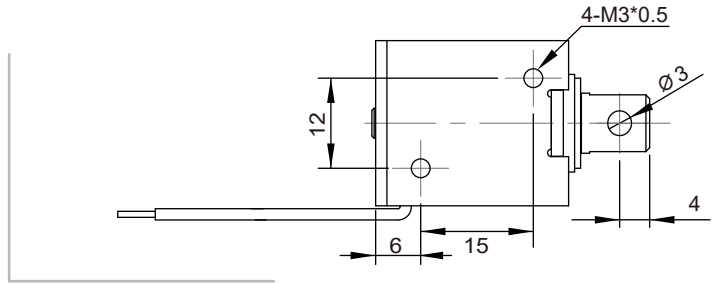
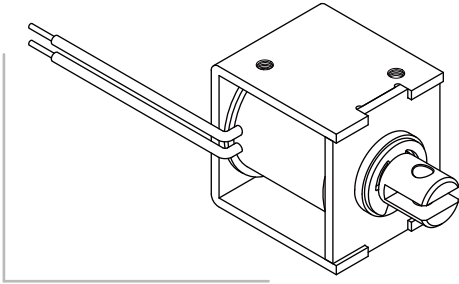


# SH-0826

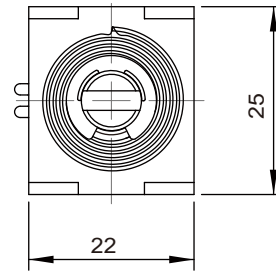
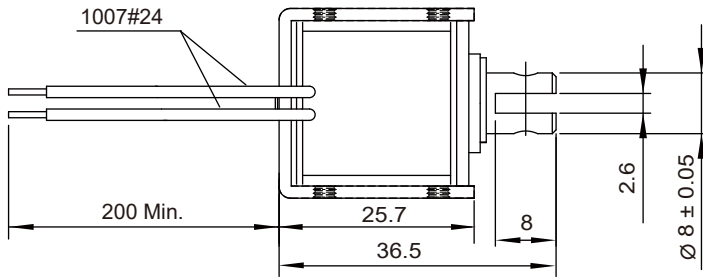
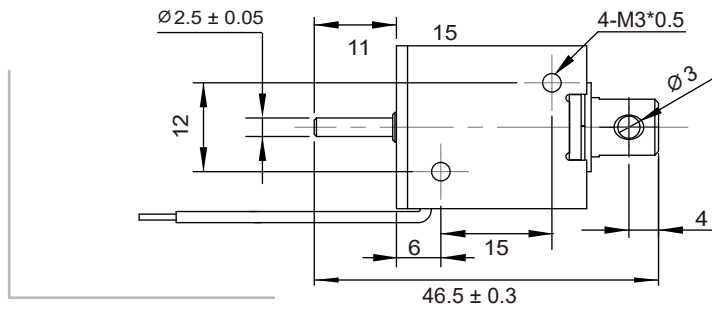
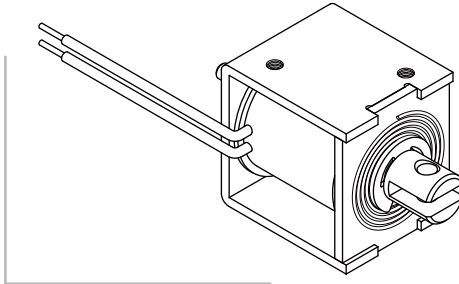
# Open Frame Solenoid

Unit : mm  
Shown energized

## PULL TYPE

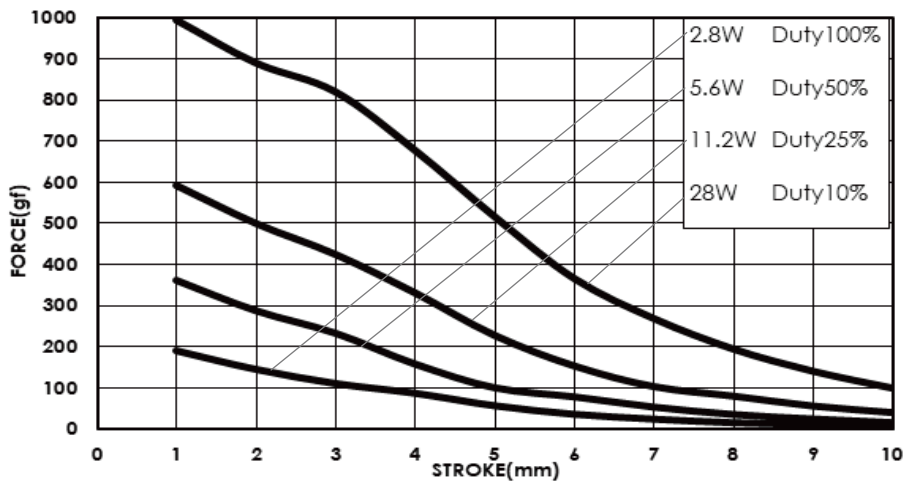


## PUSH TYPE



Total Weight : 66 g

## DATA FORCE



## COIL DATA

Duty cycle(%) = $\frac{\text{"ON" time}}{\text{"ON" time} + \text{"OFF" time}} \times 100\%$		Continuous (100%)	Intermittent (50%)	Intermittent (25%)	Intermittent (10%)
Watts at 20°C		2.8	5.6	11.2	28
MAX. "ON" time in seconds		∞	100	36	7
Type no.	Resistance(20°C)±10%	DC Volts			
SH-0826S/L-06V	12.9	6	8.5	12	19
SH-0826S/L-12V	51.4	12	17	24	38
SH-0826S/L-24V	206	24	34	48	76
SH-0826S/L-48V	823	48	68	96	152