

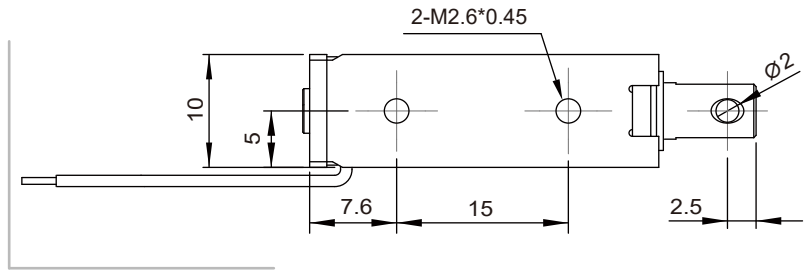
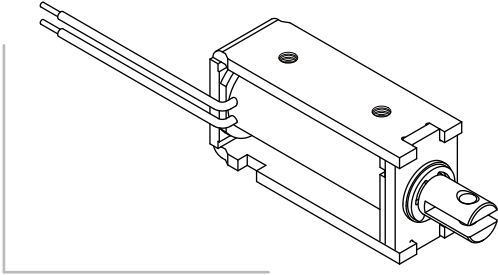


SH-0530

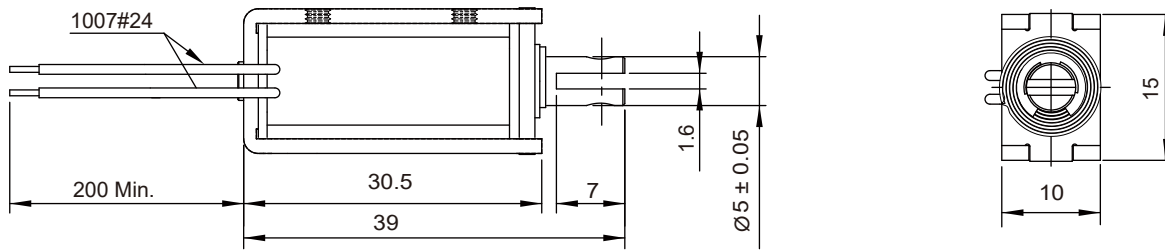
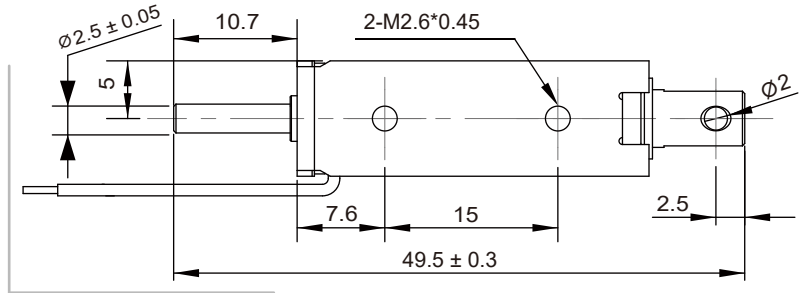
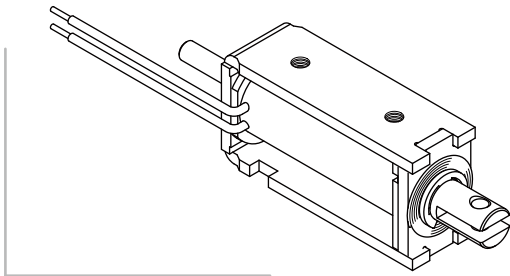
Open Frame Solenoid

Unit : mm
Shown energized

PULL TYPE

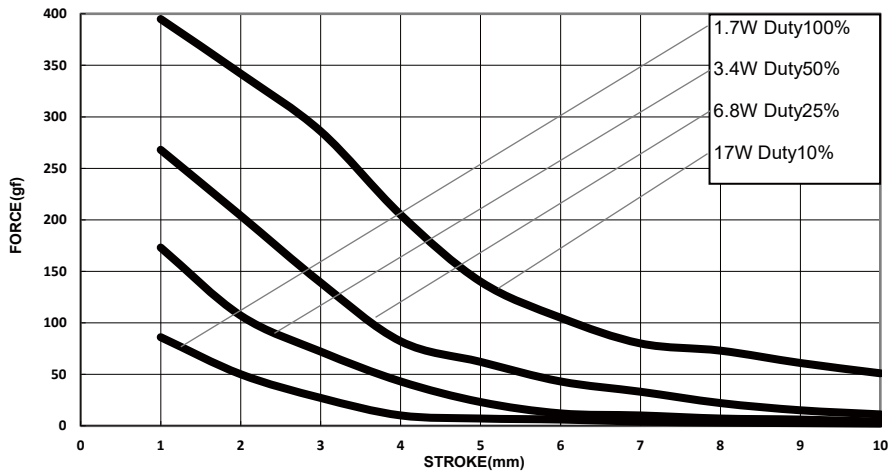


PUSH TYPE



Total Weight : 23 g

DATA FORCE



COIL DATA

Duty cycle (%) = $\frac{\text{"ON" time}}{\text{"ON" time} + \text{"OFF" time}} \times 100\%$		Continuous (100%)	Intermittent (50%)	Intermittent (25%)	Intermittent (10%)
Watts at 20°C		1.7	3.4	6.8	17
MAX. "ON" time in seconds		∞	50	18	2
Type no.	Resistance(20°C)±10%	DC Volts			
SH-0530S/L-06V	21.2	6	8.5	12	19
SH-0530S/L-12V	84.7	12	17	24	38
SH-0530S/L-24V	339	24	34	48	76
SH-0530S/L-48V	1355	48	68	96	152